

**SUNJIN JONGHAP Co., Ltd.**

Repair and Supply parts for High speed Engines  
#3, Daepyeong-ro 41beon-gil, Yeongdo-gu, Busan, Korea  
T : +82-51-414-7300, F : +82-51-414-8870  
E-mail jonghap@sunjinckm.com

**SUNJIN SHIPBUILDING Co., Ltd.**

Shipyard for steel work and dry docking service  
#14, Daepyeongnam-ro 51beon-gil, Yeongdo-gu, Busan, Korea  
T : +82-51-414-8885, F : +82-51-415-3350  
E-mail : shipbuild@sunjinckm.com

**CM KOREA Co., Ltd.**

Manufacture and Repair Fish Processing Equipment  
#14, Gamchunhang-ro 405beon-gil, Saha-gu, Busan, Korea.  
T : +82-51-262-3554, F : +82-51-262-3556  
E-mail : cmkorea@sunjinckm.com

**HYDRO KOREA Co., Ltd.**

Hydraulic equipment supplier in ship repair market  
#11, Gamchunhang-ro 405beon-gil, Saha-gu, Busan, Korea.  
T : +82-51-262-3510, F : +82-51-262-3520  
E-mail : hydrokorea@sunjinckm.com

**SUNJIN SUNJIN ENTECH**

**SUNJIN ENTECH CO., LTD.**

#11, Gamchunhang-ro 405beon-gil, Saha-gu, Busan, Korea  
T.+82-51-414-7308, F.+82-51-262-3520,  
E-mail : service@sunjinckm.com.



**TOTAL SOLUTION PROVIDER**

# SUNJIN

Total ship repair service including Hull and Engines

SINCE 1962

- High Quality Service
- Guaranteed Delivery
- Competitive Price
- Flexibility in Orders
- Customer Satisfaction
- Safety First



# SUNJIN ENTECH

## Company Info

SUNJIN ENTECH provides a comprehensive range of services from general repairs to modification projects. Backed by highly advanced engineering and a zero-tolerance quality inspection system, the company offers sophisticated repair services to satisfy the ship owners' needs. Sunjin Entech is characterized by short lead times, high quality work and, consequently, minimal vessel downtime. Also, our extensive network of suppliers is capable of delivering all equipment necessary for a quick repair of your ship. Especially, we have an exclusive quay wall and could use several berths, capacity for vessels up to 800 meters.

- 2001** 01 Established Sunjin Engineering  
08 Acquisition Certificate ISO 9001:2000 (Korea Register)
- 2002** 12 Appointed industrial company for admittance military manpower
- 2003** 05 Appointed vessel repair company by Fishery Cooperatives
- 2004** 01 Acquired certificate of Russian maritime Register of shipping
- 2010** 03 Acquired technology innovation company (INNO-BIZ) cert.  
05 Appointed as IBK FAMILY company
- 2011** 01 Appointed as Job world best 600 enterprises (IBK BANK)  
11 Be granted an appreciation plaque of National affair office
- 2012** 03 Be granted an appreciation plaque as honest tax payment  
04 Designated as Family company of Korea National ma  
12 Appointed as Shinbo-star company by trust guarantee funds
- 2013** 07 Merged with Sunjin Sherwood and named as Sunjin Entech
- 2014** 04 Designated target for support export start up program (KITA)  
06 Appointed Global Small-business enterprise (KITA)  
12 Be granted plaque on Marine Day by Prime minister
- 2015** 10 Awarded New intellectual 2015



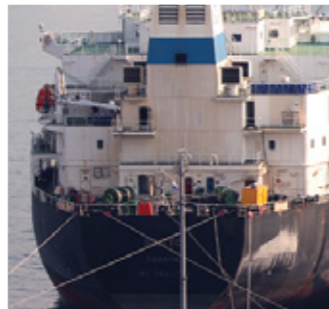
# BUSINESS AREA

- Total Ship Repair with 320M pier
- Modification works
- Structure & Pipe works
- Ship conversion works
- Ship extension
- Voyage repairs
- Re-equipment
- Processing equipment
- Naval Ship repair
- New building
- Hydraulic system repairs
- Boilers
- All kinds of Ship repair works are available
- WPS Certificates from ABS, DNV, KR

Total Solution - One stop Service Provider



Voyage Repair



All Kinds of Ship Repair



Total Ship Repair



Re-equipment



Hydraulic System Repair



320m Pier & Docking Facility



Ship Conversion Works



All Kinds of Ship Repair



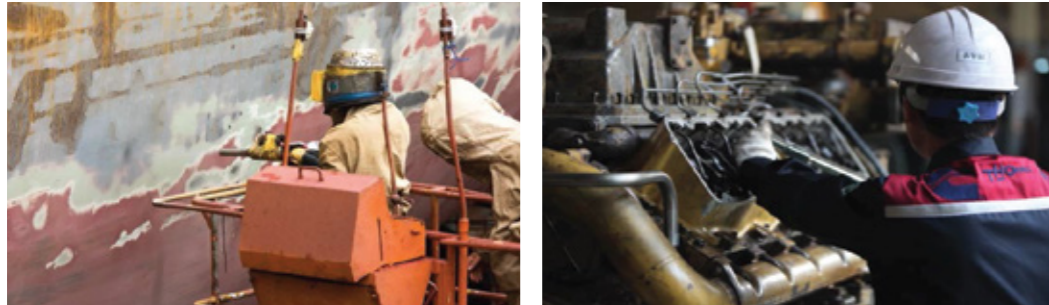
One Stop Service



## VESSEL REPAIR SERVICE

- Total Vessel Repair with 320m pier & docking facilities
- Customized Technical and Engineering Services
- Engine & Machinery Commissioning, Repair, A/S Service
- Project Coordination including Manpower and Procurement for each stage

*All kinds of vessel engineering, maintenance & repair services are available!*



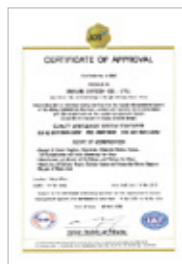
## GENUINE SPARE PARTS SUPPLY

- MAN 2 & 4 Stroke Engine Parts Supply – STX Authorized Dealer
- High Speed Engine & Parts Supply  
- CUMMINS, STEYR MOTORS, VOLVO PENTA Authorized Dealer
- Hydraulic Parts – Rolls Royce, TWG Winch Group Authorized Dealer

*Only high quality genuine parts will be provided in a time manner!*



## MAJOR CERTIFICATES



ISO 9001



RS Cert



Main Biz



Fisheries  
New Intellectual  
Award



Marine Day  
Prime minister's  
Citation



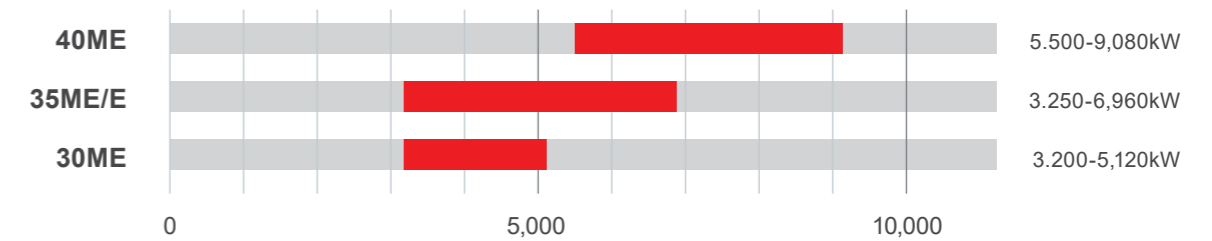
## WHY SUNJIN,

- Experiences and Know-how over 60 years
- Technical support and A/S Service for STX-MAN engine by highly skilled engineers
  - Troubleshooting solution for Emcy/Exchange base repair and Onboard Maintenance
  - Technical Assistants for changing parts by international regulations
- Fast and accurate parts supply according to Onboard Planned Maintenance Schedule
- Re-conditioning work at the workshop

## SUPPLY MODEL LINES

### MAN 2 Stroke Engine

■ 2 Stroke



Source : STX Engine

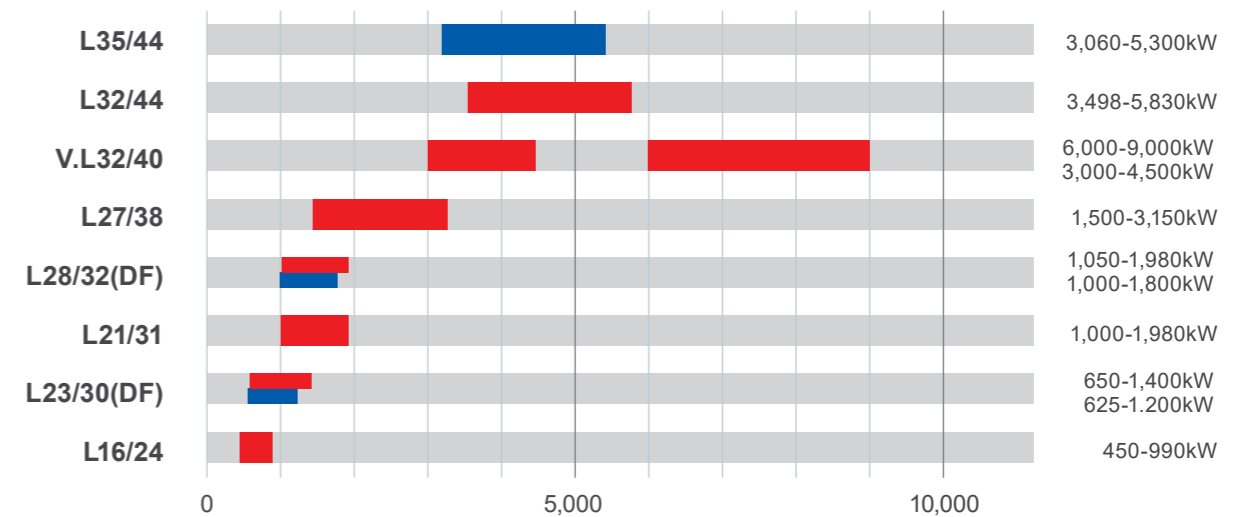


## STX AUTHORIZED AGENCY

- As an authorized distributor of STX Engine, we supplies genuine parts for medium and large diesel engines to domestic and foreign customers.
- We have lots of Genuine Parts stocks for all STX Engine models; so, we can handle the emergency orders.  
 We can also provide the parts with competitive prices and fast delivery time for customers' satisfaction.

### MAN 4 Stroke Engine

■ 4 Stroke ■ Dual Fuel



## WHY SUNJIN,

### Authorized Sales/Service Distributor!

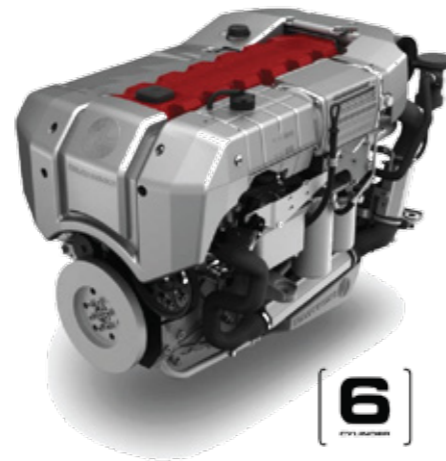
We are an exclusive distributor in S. Korea and provide the certified & skilled technicians.

### To meet the Customer's Needs!

We provide parts and technical services for the customer's satisfaction.

### All Marine Propulsion!

SE 4 & 6 cylinder, MO 4 cylinder, SEC 4- cylinder engine (55-215 kW), HDS, IFG, etc.



## WHY SUNJIN,

### Service with our own piers & workshop!

Own Piers & docking facility with service partnership Site areas consists in total of 7,500 square meters Various machine tool, welding, testing/blasting equip.

### Genuine Spare Parts!

S/G, Mooring Winch/Windlass parts are available with timely delivery of genuine parts to your vessel.

### Total Solution Provider!

Allow tailored solutions more suited to individual customer needs.

## PATERNSHIP

### Rolls-Royce extends service capability in South Korea with Sunjin Entech Paternship

23 March 2015

Rolls-Royce has extended its service capability in South Korea by partnering with Busan-based ship repairer Sunjin Entech.

The new service agreement means that Rolls-Royce can now provide customers with a bespoke one-stop service solution at the Gupyung and Youngdo yards, Sunjin's two main repair hubs.

Kim Jae Chul, Sunjin Entech, President said: "This partnership agreement with Rolls-Royce allows us to enhance the technologies and services we can offer our customers. By packaging quality spares and services from Rolls-Royce into a single ship repair solution we become more competitive and attractive to existing and potential customers."

Anthony Tan, Rolls-Royce, Marine Services Director – Northeast Asia, said: "Sunjin has established a solid reputation for ship repair over the past 52 years and this new agreement will further strengthen and enhance its standing in a competitive ship repair market. Sunjin has piers and docking facilities that are ideal for providing a total ship repair solution for engines, hulls, hydraulic equipment and piping work from one location."

The Gupyung facility, situated by the waterfront in the Saha-gu area, benefits from a floating dock and four finger piers up to 100m in length. These are supported by 15t and 30t Goliath cranes and a state-of-the-art milling, welding and testing workshop.

The Youngdo facility is in the Youngdo-gu area and both facilities offer repair solutions for a broad range of marine equipment and vessel types. Sunjin Entech also offers a range of crew services to customers, including a seafarers' centre and a Russian translation service.



## SUPPLY MODEL LINES



### DP Winch

Planetary winches for commercial/government equipment  
Serving the towing and recovery markets

### Gear Products

Planetary/worm gear winches, drives, rotator for trucks, cranes, heavy equipment  
Serving the utility, construction, forestry, marine, and mining markets

### Greer

Load moment indicators, anti-two block systems, angular rotation feedback,  
and drum rotation indicators for lattice and telescopic boom cranes

### LANTEC

Planetary winches, hoists, and gear reducers

### Pullmaster

Planetary winches for commercial fishing boats, caisson drilling equipment,  
pipe layers, tractor/skidlers, and dredges

### Tulsa Winch

Planetary/worm gear winches, swing drives for large oilfield trucks,  
heavy haul tractor packages, digger derricks, cranes and aerial work platforms

### RUFNEK

Planetary/worm gear winches, rotating mousehole, rotary table drives,  
and coiled tube injector heads for oilfield equipment



LANTEC

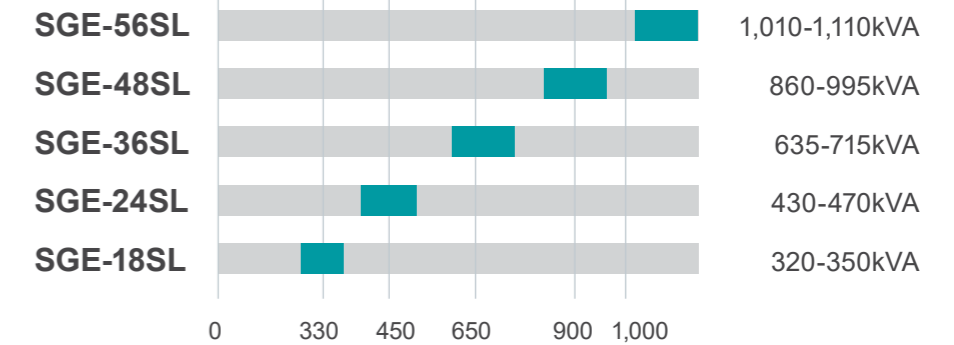
Pull+MASTER



## SUPPLY MODEL LINES

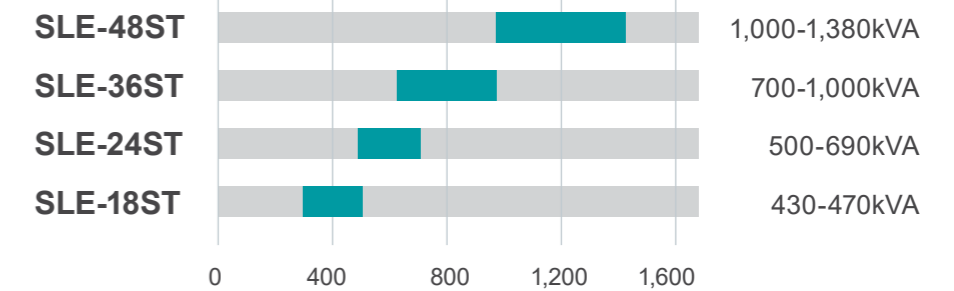
### Gas Fuelled Generation

Below IMO Tier III



### Diesel Fuelled Generation

IMO Tier II Range





## WHY CUMMINS AUTHORIZED DEALER SUNJIN,

### Highly Skilled Technicians!

We provide the certified & skilled technicians for Cummins Engine Overhaul.

### To meet the Customer's Needs!

We provide various services for the customer's satisfaction.

### Only Genuine Spare Parts Supply!

We have adequate and genuine Cummins parts in our warehouse to provide prompt service to the customers for major models .

### Various Recommendation Certificates for High Speed Engine!

We are specialized in all types of Marine Speed Engine Overhaul.

### All Marine Propulsion, Auxiliaries, Gensets are available now!

QSK, QSM, QSL, QSB, KTA, NTA, VTA, ONAN Genset, C-Power Marine Genset, etc.

All kinds of Cummins genuine spare parts are available.



Dear Cummins Customer,

Sunjin Jonghap has been an authorized dealer of Cummins Sales and Service Korea (CSSK) since 2008. They have been a reliable partner of CSSK and have continuously grown by providing excellent sales and service to their customers. They are very experienced in maintenance, repair and overhaul of Cummins engines.

I am pleased to recommend Sunjin Jonghap as an authorized dealer to your company for the sales, technical advice, or aftermarket services on Cummins engines.

**Bill Kime**  
General Manager  
Director & General Manager  
Korea Distribution Business Unit

Cummins Sales and Service Korea Co., Ltd.  
228-1, Songgo-gil, Songgo-Eup, Seobuk-Gu  
Cheonan-City, ChoongNam-Do  
(Zip) 31044, South Korea



## OTHER SUPPLY LISTS

CATERPILLAR®

MITSUBISHI

VOLVO  
PENTA

DETROIT

Mercedes-Benz

YANMAR

ISUZU  
MARINE

DOOSAN

Fleetguard®

DEUTZ

IPD

Parker

SKF

